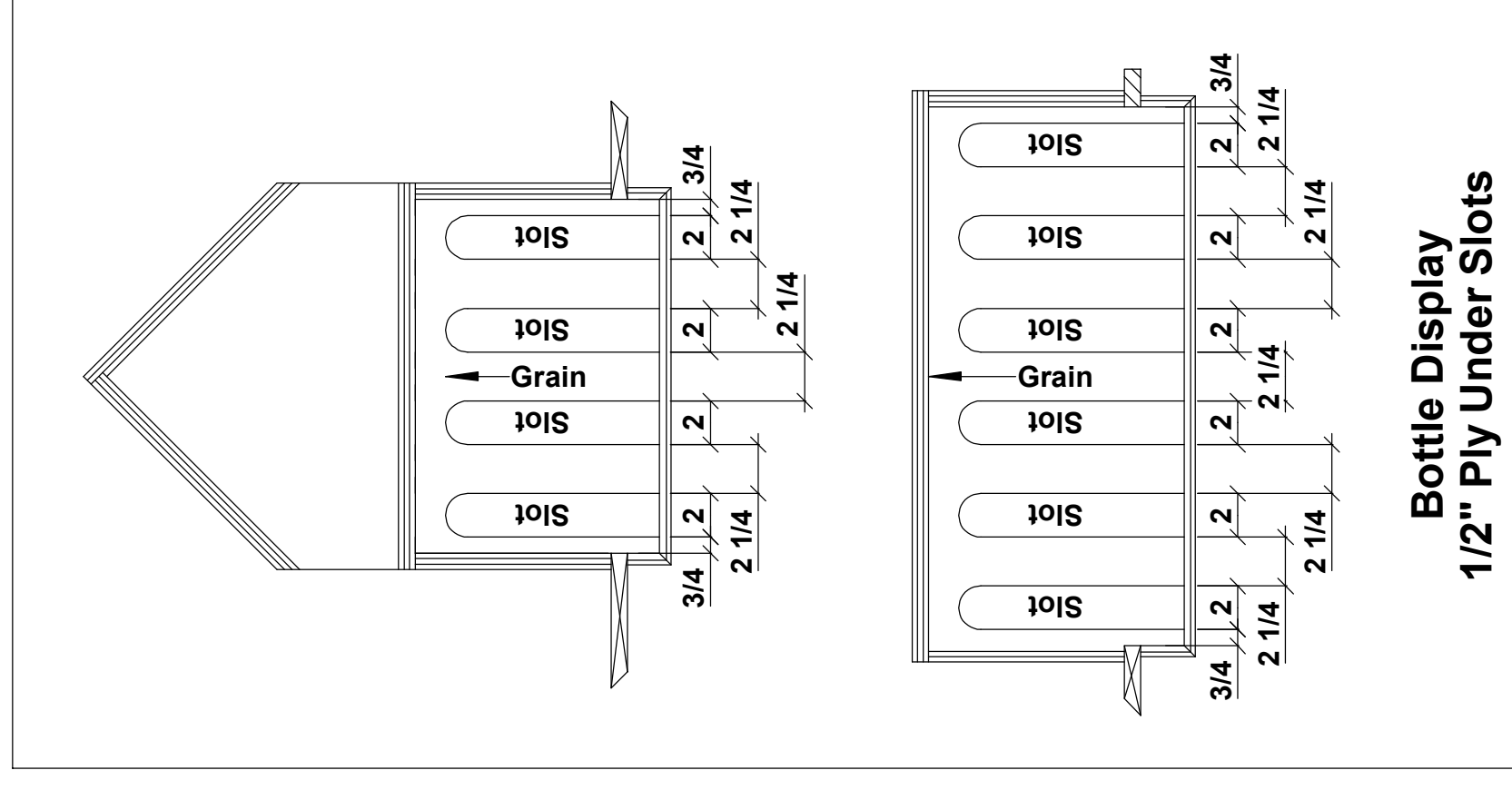


- Notes:**
1. Casework is Walnut Ply Boxes with FAS Select Stain Grade Walnut lumber faces (with the occasional small defect & tight knot)
 2. All raised paneling is 3/4" thick.
 3. Ladder & ladder rail is excluded.
 4. Finishing is excluded.
 5. Bumpers @ doors & drawers by others.
 6. Wood top to be Random Plank with Stain Grade Walnut nosing (knobs/pulls) by others.
 7. All decorative cabinet hardware (knobs/pulls) by others.
 8. All T&G is Excluded.
 9. All cabinets backs are 3/4" ply.
 10. Verify all dimensions.

Revised

Bottle Storage

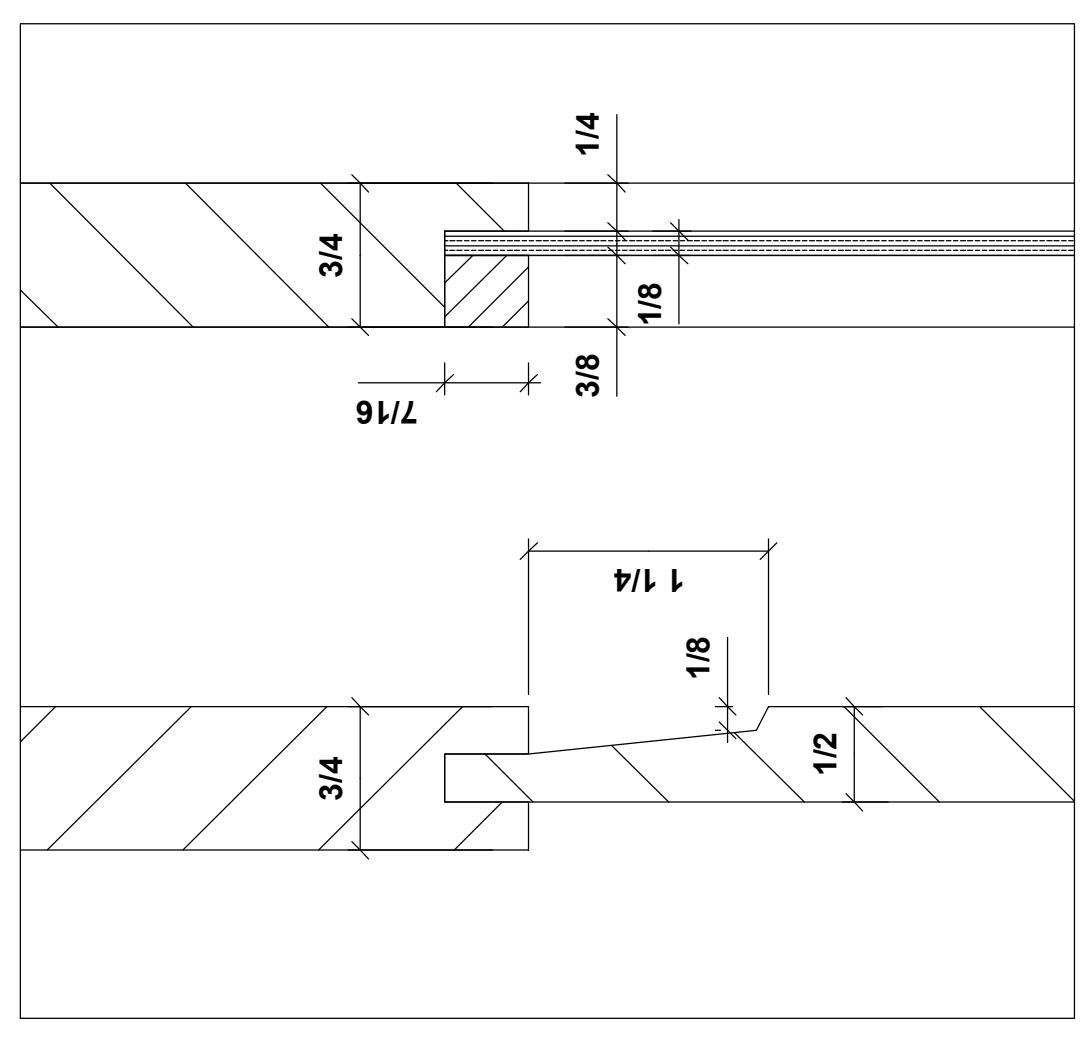
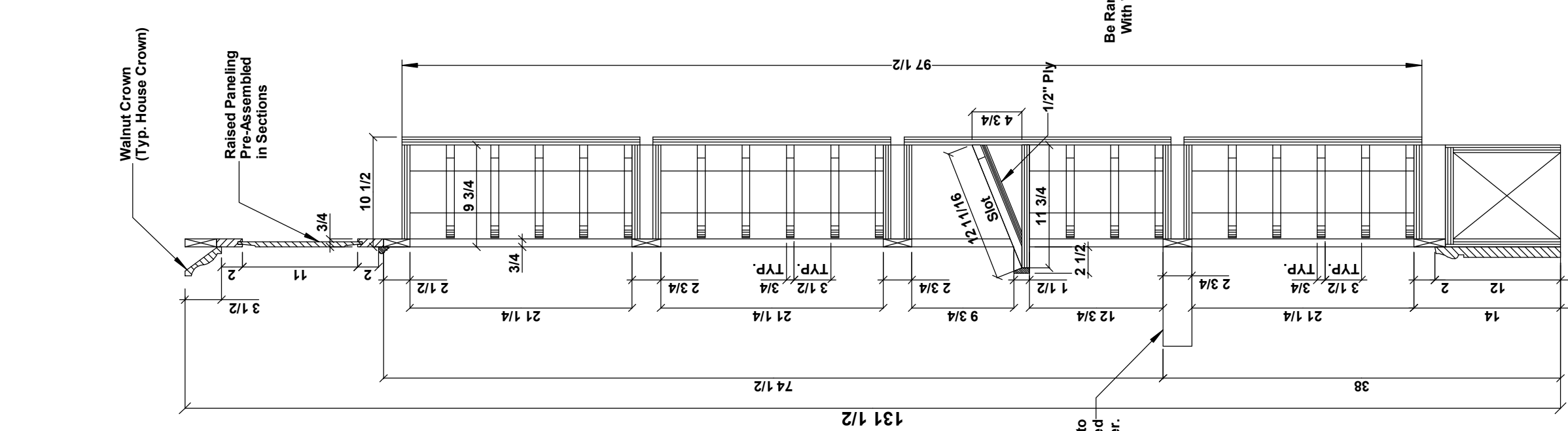
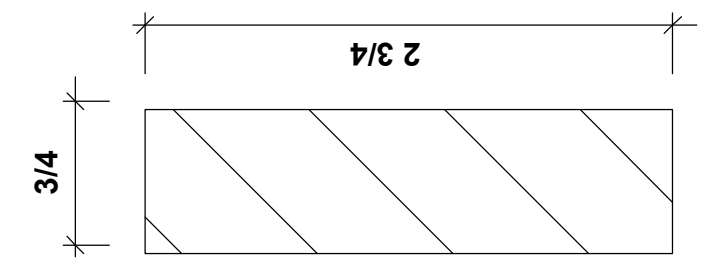
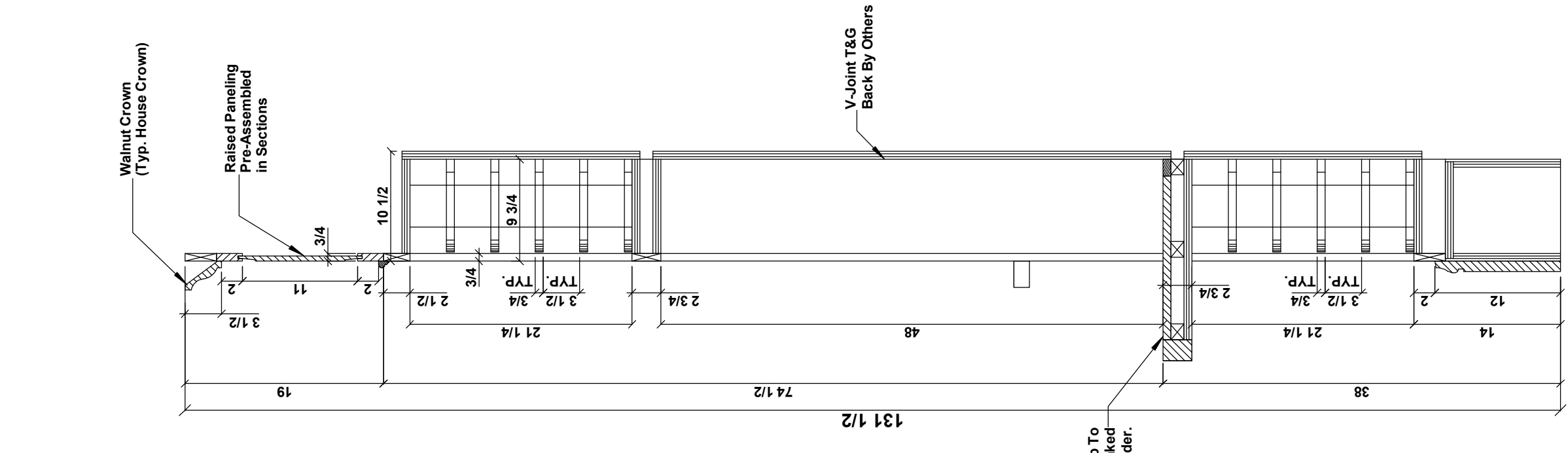
Please Verify All Dimensions



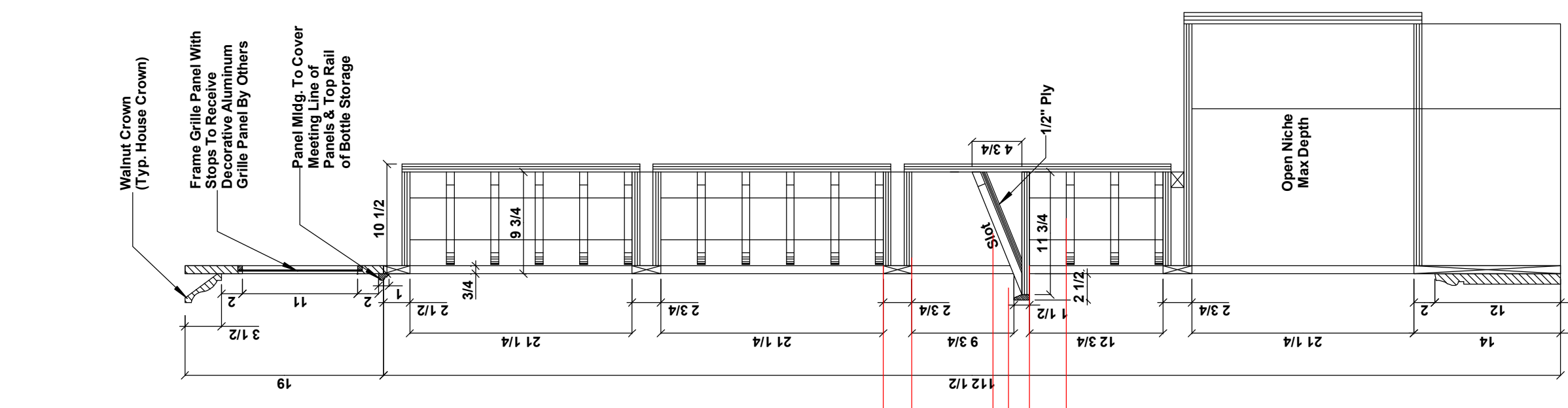
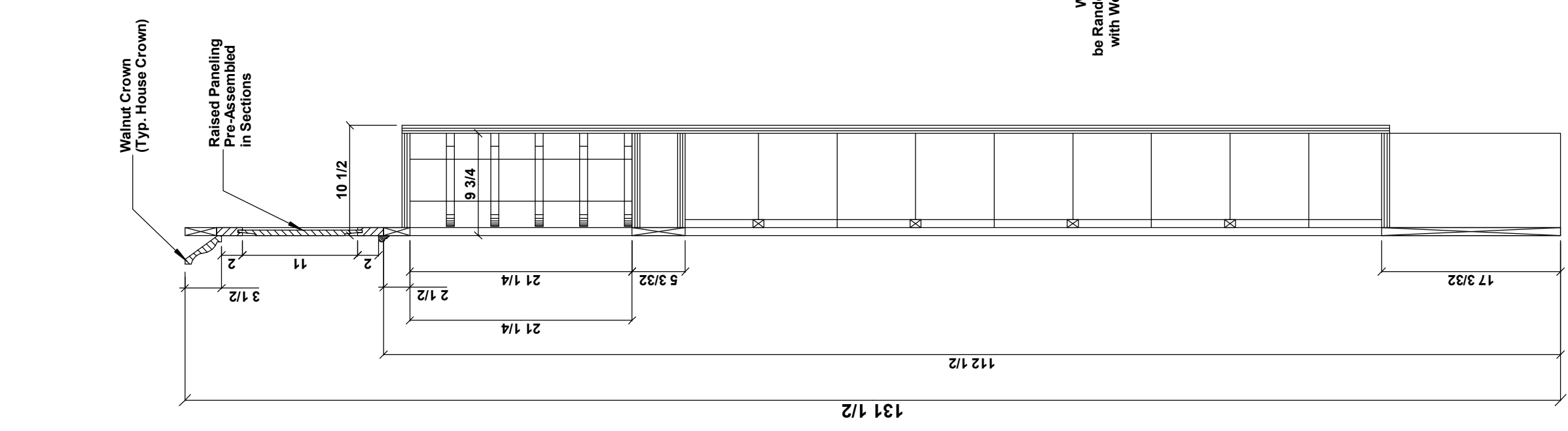
Bottle Storage

S4S Stile & Rail Material @ Wall
 FAS Select Stain Grade Walnut
 (with occasional small
 defect & tight knot)
 80 lf - 3/4 x 2 3/4
 Shipped Loose
 Contractor To Specify Lengths

Revised

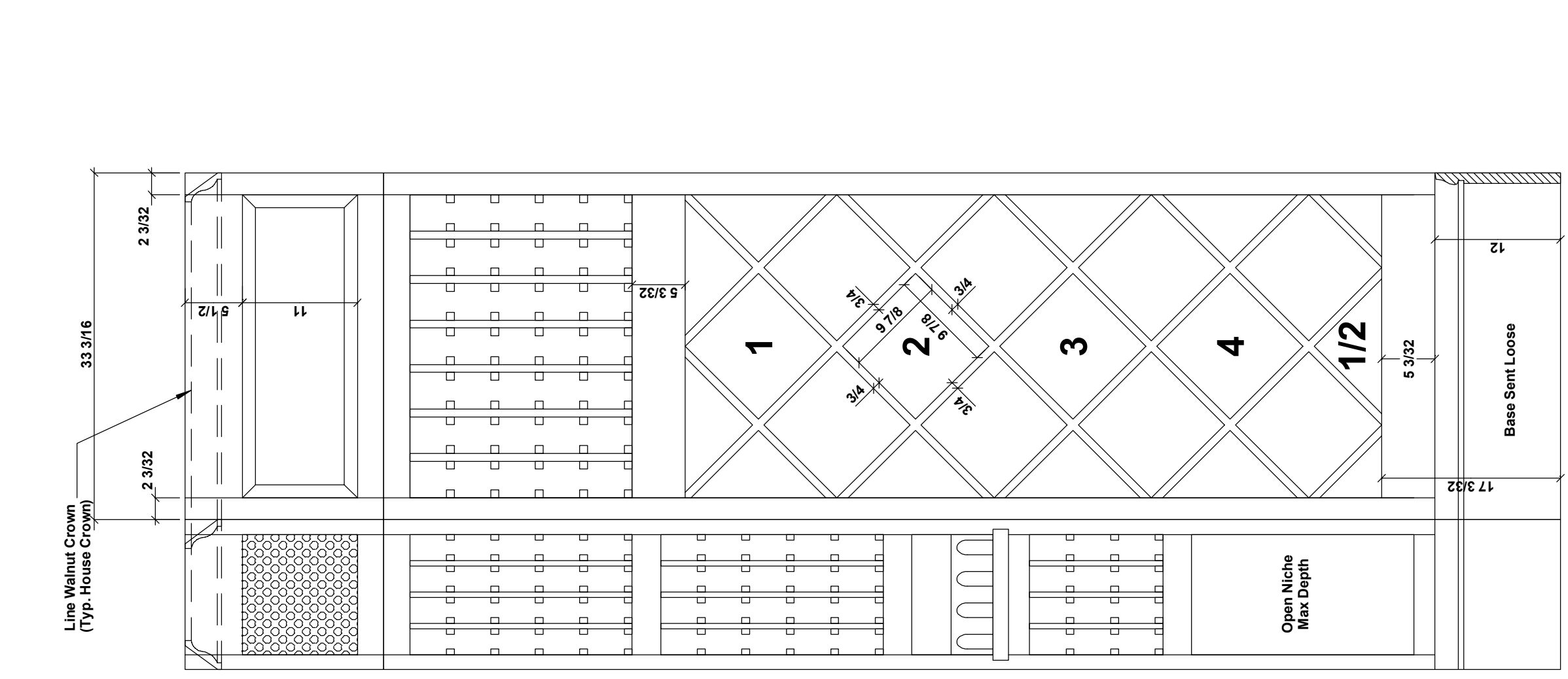
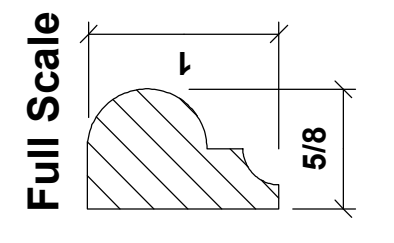
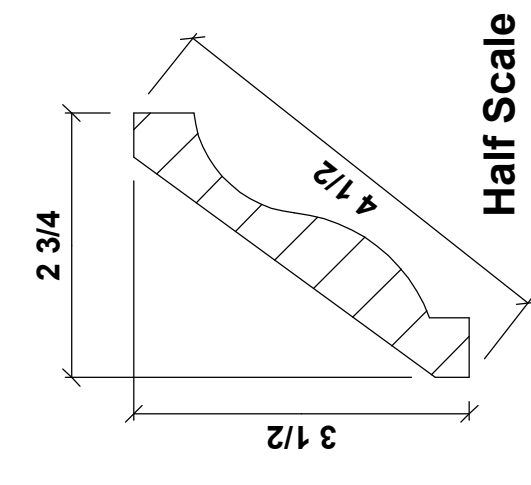
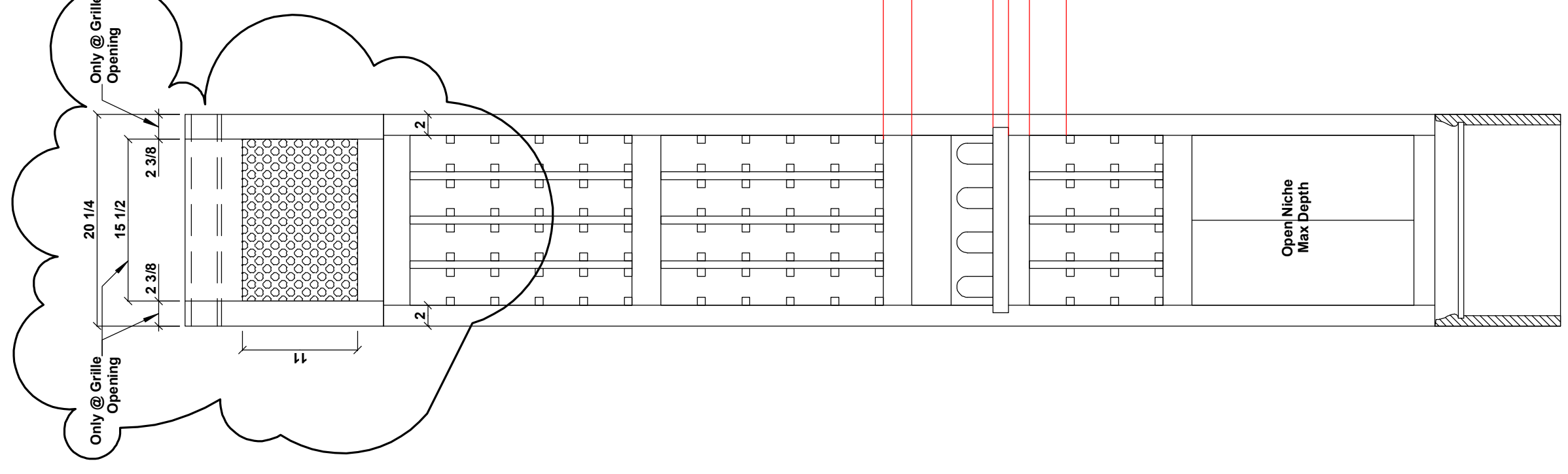


Raised Paneling & GrilleDetail -
 Pre-Assembled in Sections
 FAS Select Stain Grade Walnut
 (with occasional small
 defect & tight knot)



Crown
 FAS Select Stain Grade Walnut
 (with occasional small
 defect & tight knot)
 40 lf - 3/4 x 4 1/2
 Shipped Loose
 Contractor To Specify Lengths

Panel Mould
 FAS Select Stain Grade Walnut
 (with occasional small
 defect & tight knot)
 30 lf - 5/8 x 1
 Shipped Loose
 Contractor To Specify Lengths



Room Base
 FAS Select Stain Grade Walnut
 (with occasional small
 defect & tight knot)
 25 lf - 1 x 12
 Shipped Loose
 Contractor To Specify Lengths

